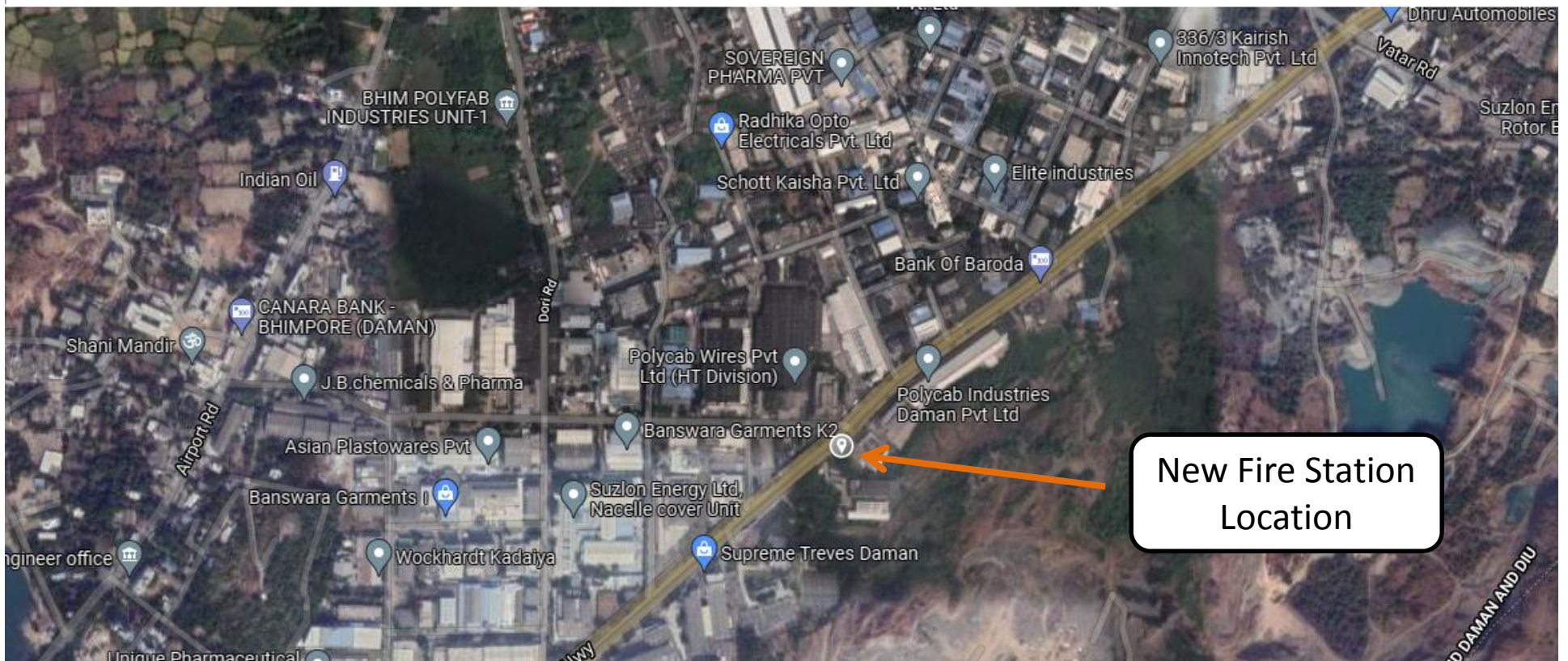


FIRE STATION, DAMAN



KADAIYA, BHIPORE, DAMAN FIRE STATION, NEAR COLDDECK INDUSTRY

3D VIEW:



3D VIEW:



3D VIEW:



3D VIEW:



3D VIEW:



3D VIEW:



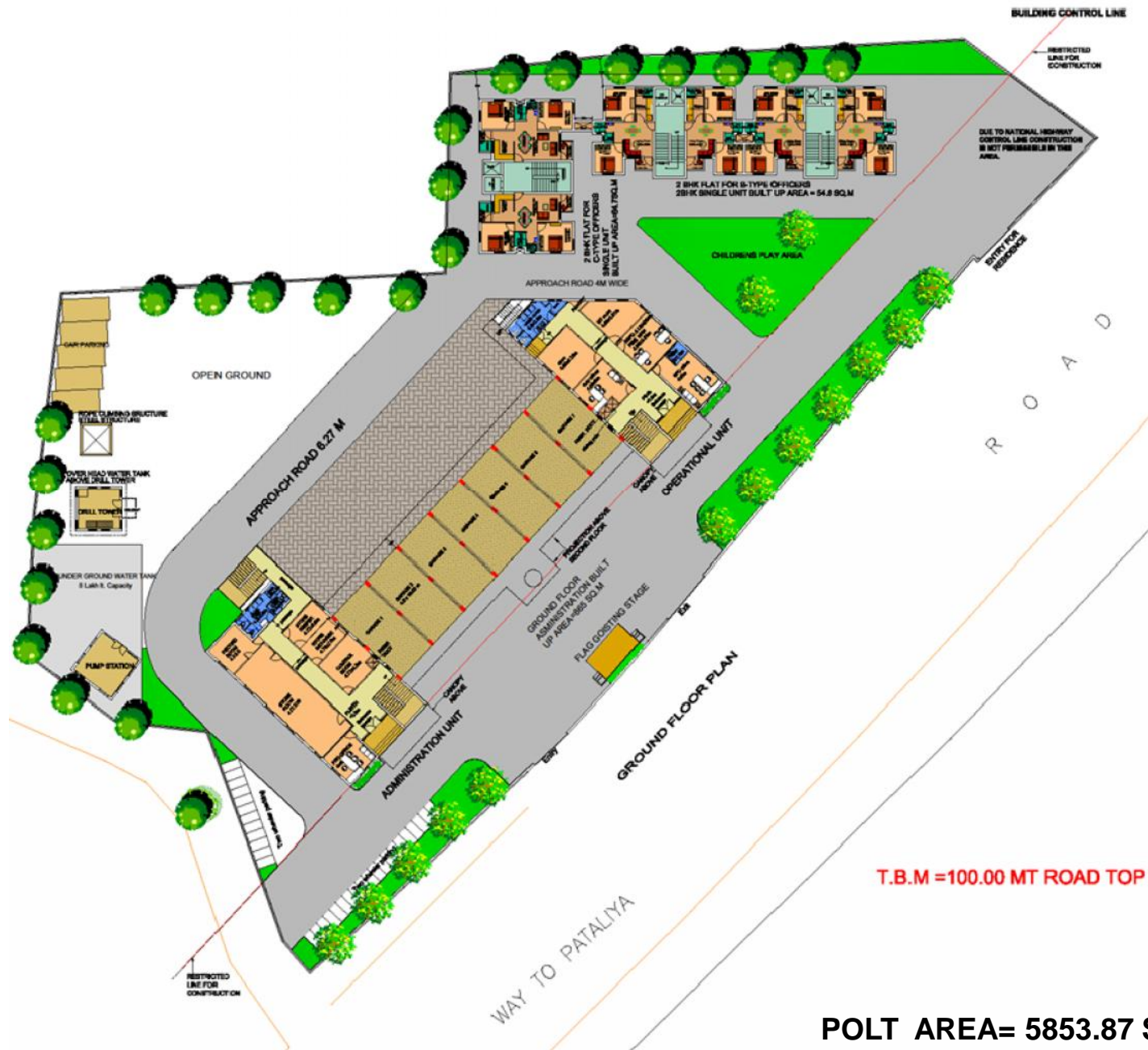
3D VIEW:



3D VIEW:



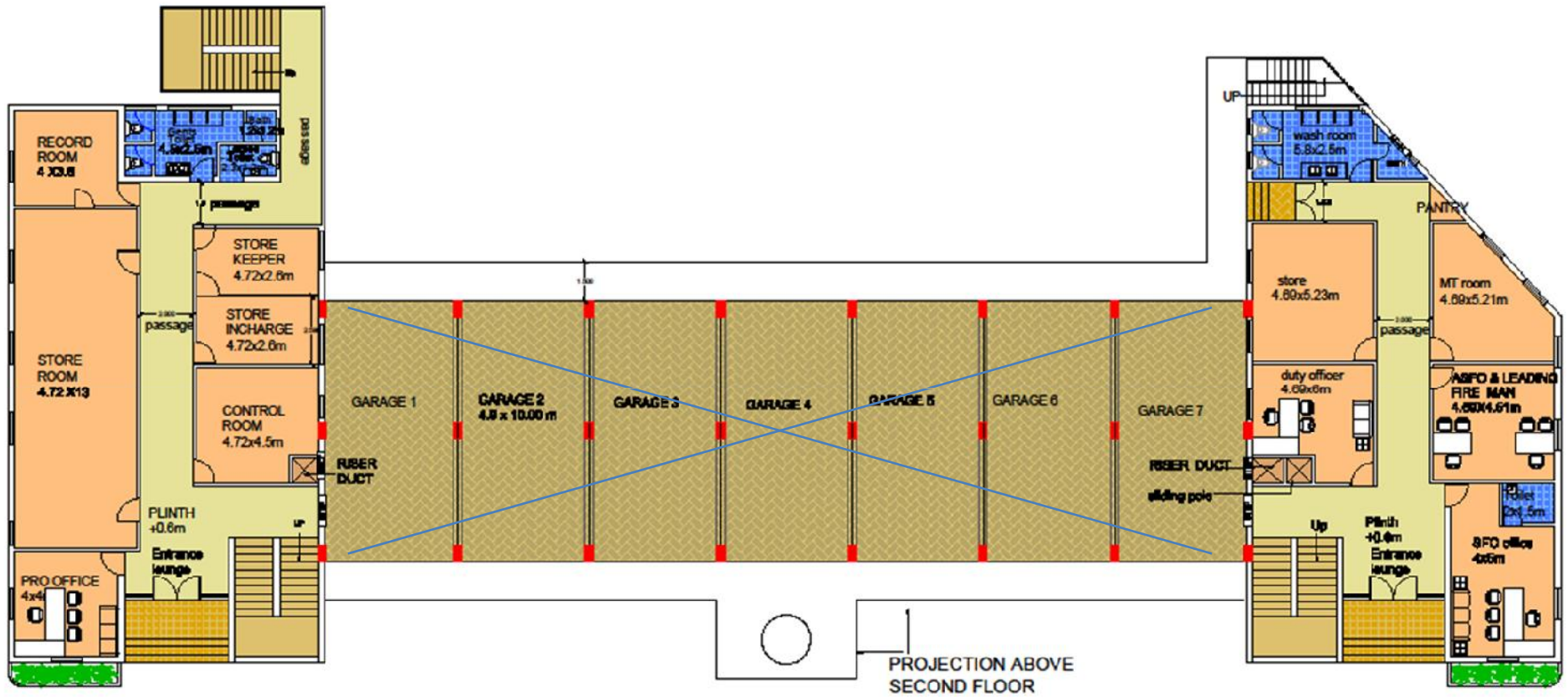
SITE PLAN:



T.B.M =100.00 MT ROAD TOP

POLT AREA= 5853.87 SQ. MT.

ADMIN BLOCK



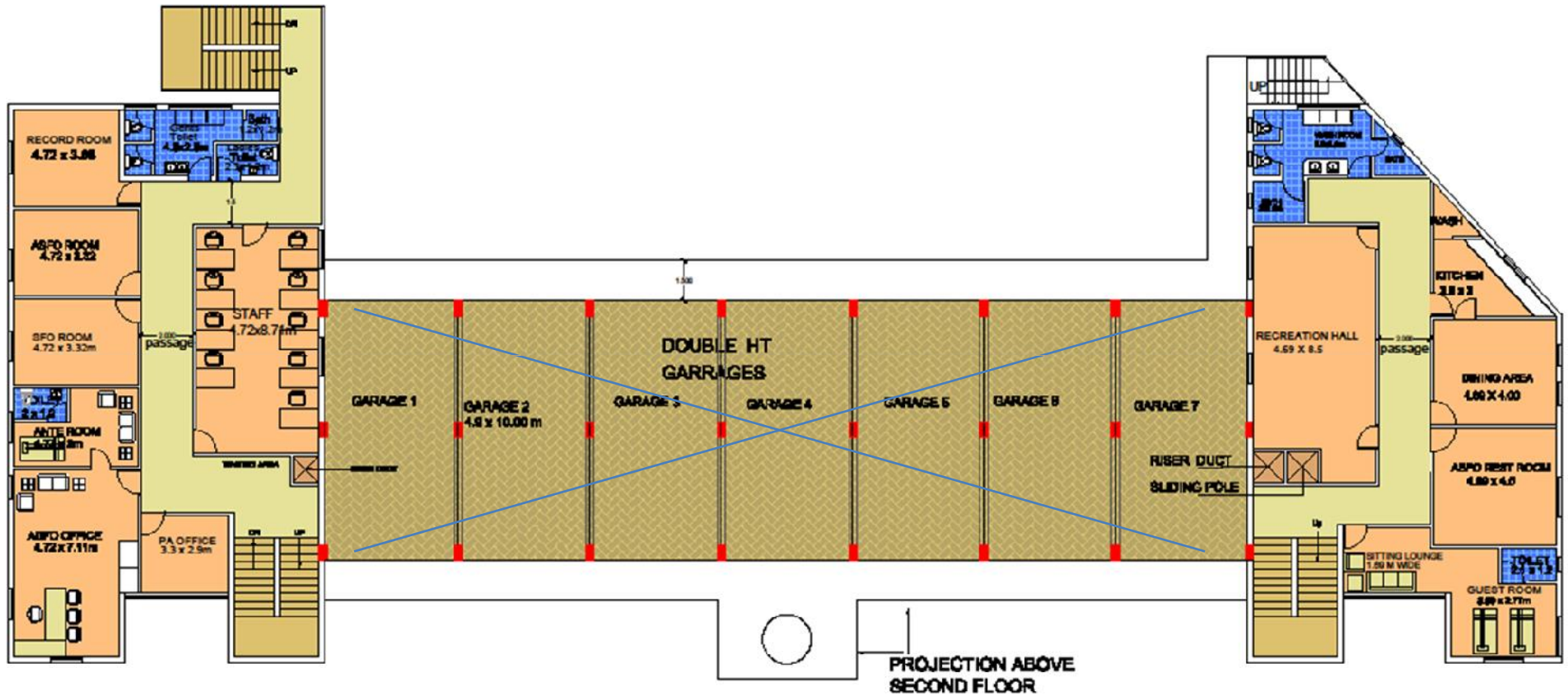
ADMINISTRATION UNIT

GROUND FLOOR PLAN

OPERATIONAL UNIT

BUILT UP AREA = 869.32 SQ. MT ¹¹

ADMIN BLOCK



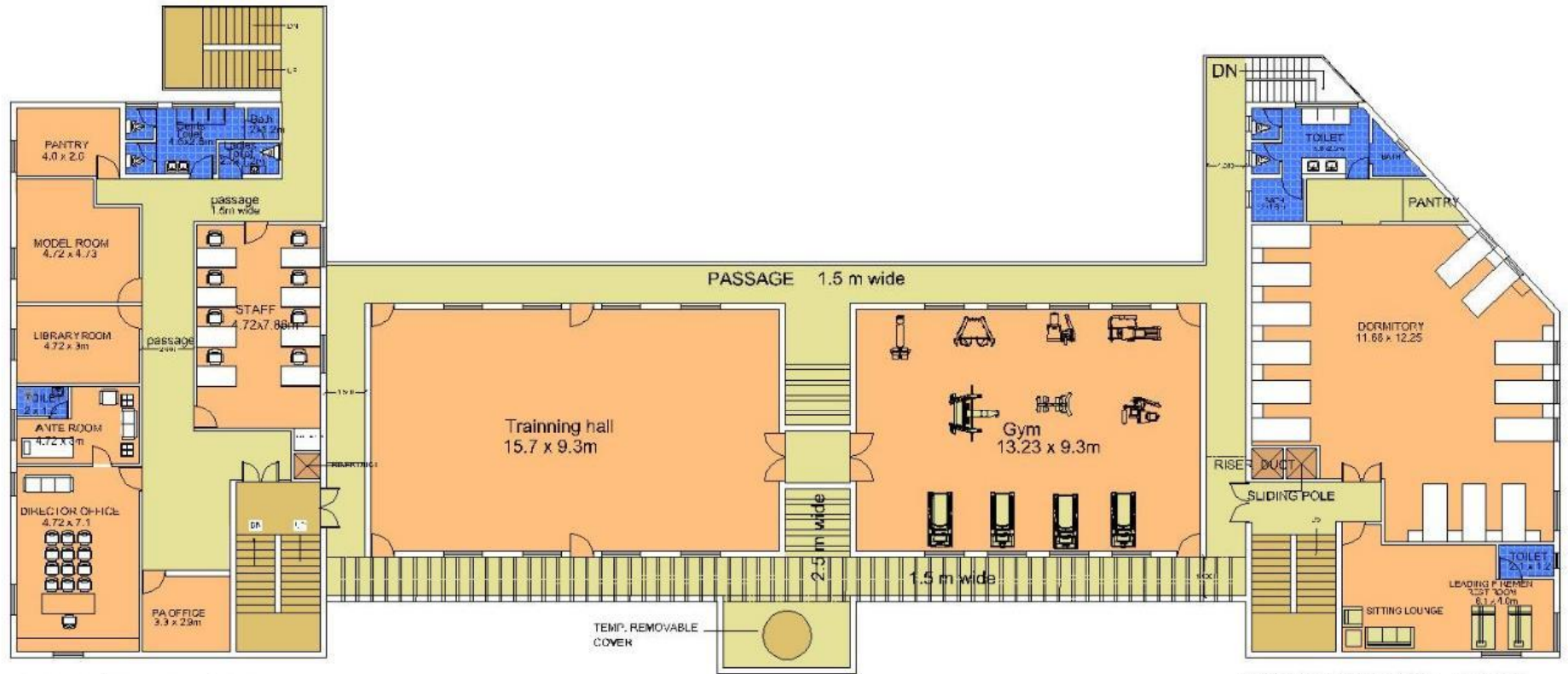
ADMINISTRATION UNIT

OPERATIONAL UNIT

FIRST FLOOR PLAN

BUILT UP AREA = 496.96 SQ. MT¹²

ADMIN BLOCK



ADMINISTRATION UNIT

OPERATIONAL UNIT

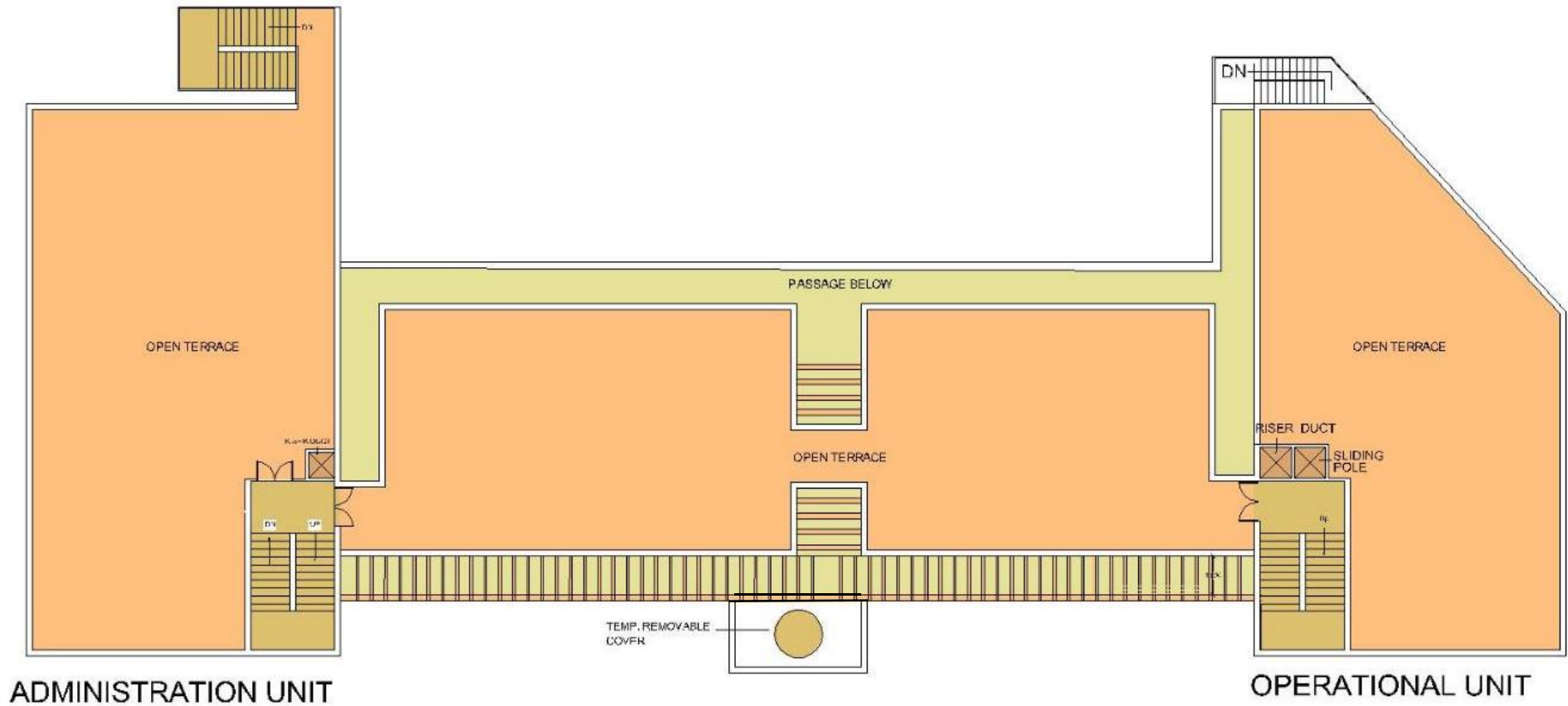
ADMINISTRATION UNIT

OPERATIONAL UNIT

SECOND FLOOR PLAN:

BUILT UP AREA = 1006.6SQ. MT¹³

ADMIN BLOCK



TERRACE PLAN:

BUILT UP AREA = 50.02 SQ. MT¹⁴

APARTMENT BLOCK :

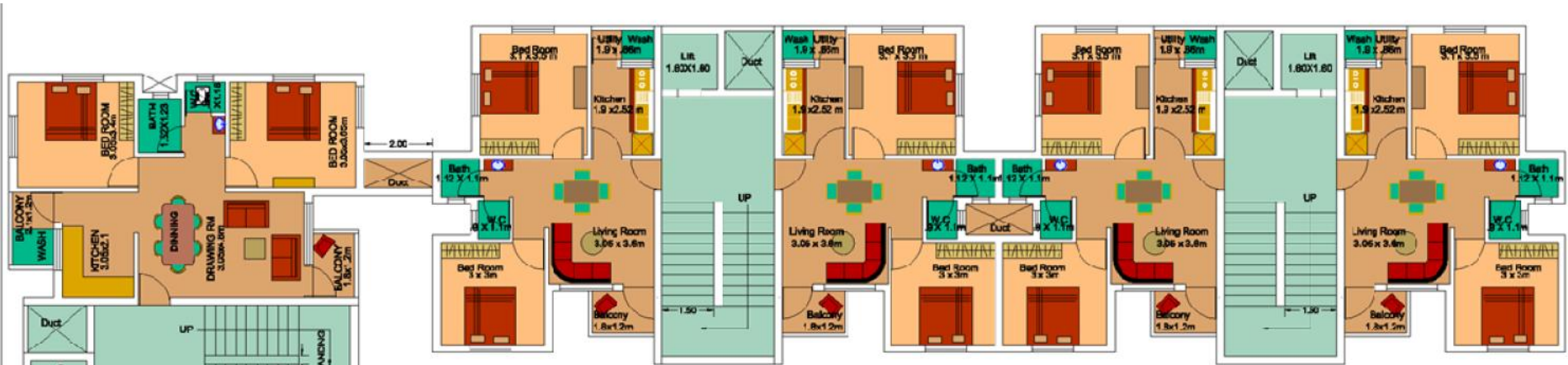
OPTION : I



**2 BHK FLAT FOR
C-TYPE OFFICERS
SINGLE UNIT
BUILT UP AREA=64.7SQ.M**

**2 BHK FLAT FOR B-TYPE OFFICERS
2BHK SINGLE UNIT BUILT UP AREA = 54.8 SQ.M**

APARTMENT BLOCK : OPTION : II

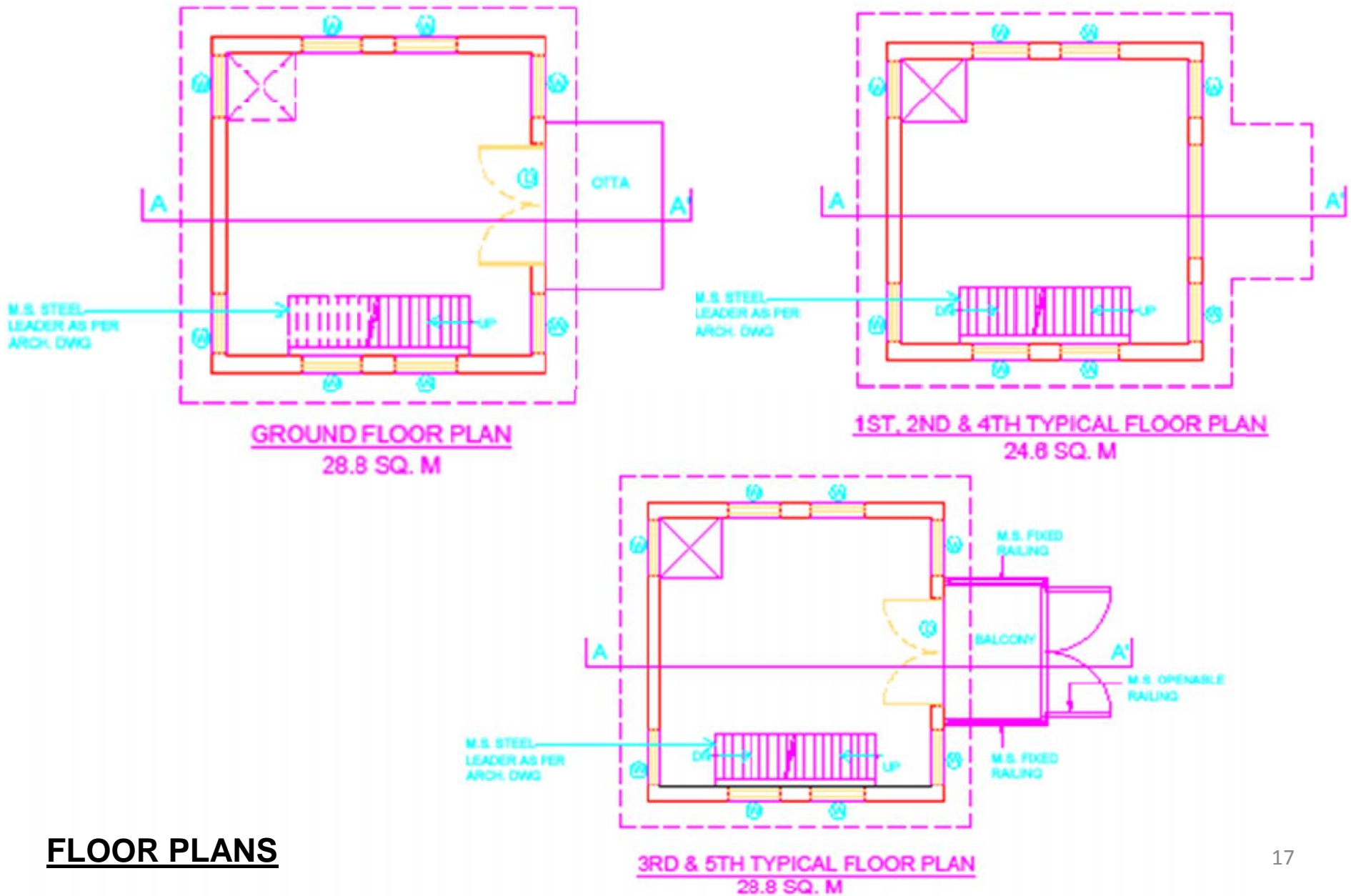


**2 BHK FLAT FOR
C-TYPE OFFICERS
SINGLE UNIT
BUILT UP AREA=64.7SQ.M**

**2 BHK FLAT FOR B-TYPE OFFICERS
2BHK SINGLE UNIT BUILT UP AREA = 54.8 SQ.M**

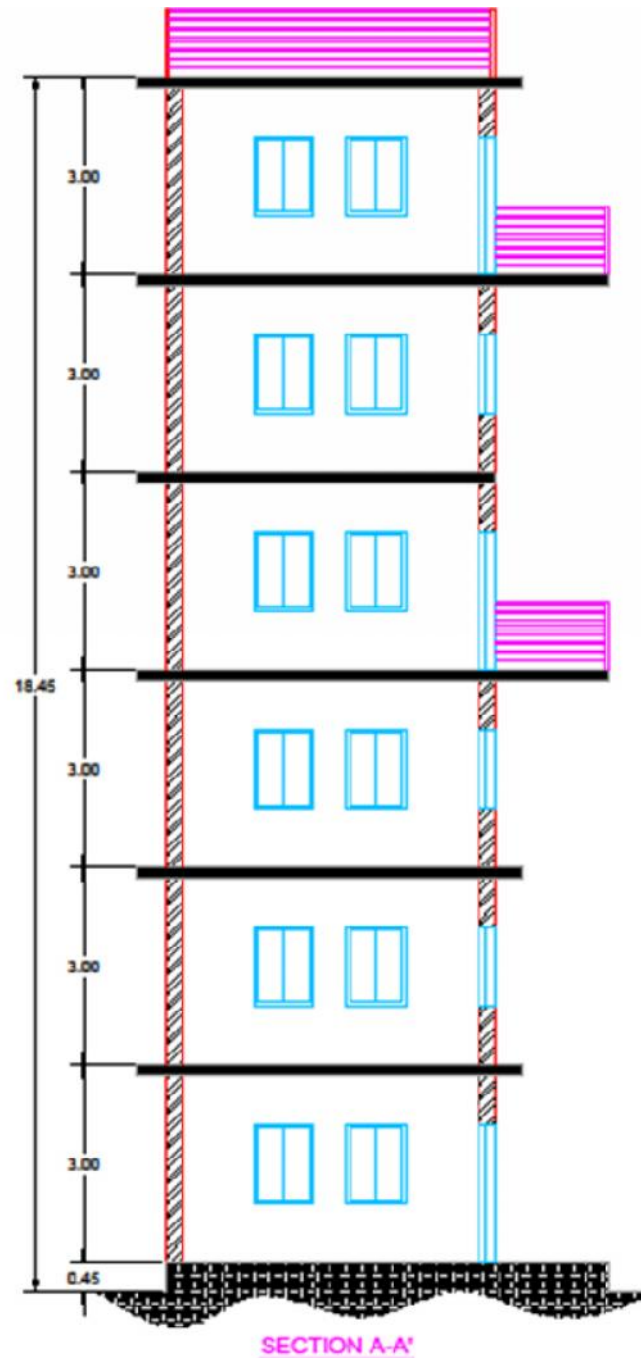
2 FLATS C-TYPE	64.7 X 2 = 129.4	SQ. M
4 FLATS B-TYPE	54.8 X 4 = 219.2	SQ. M
LIFT/ STAIRCASE LOBBY	31.9 X 3 = 95.7	SQ. M
DUCTS	4.3	SQ. M
	448.6	SQ. M

DRILL TOWER :



FLOOR PLANS

DRILL TOWER :



SECTION

REQUIREMENTS:

DETAILS WORK FOR CONSTRUCTION OF NEW FIRE STATION AND OTHER AMENITIES AT BHIMPORE, NANI DAMAN AS PER REQUIREMENT OF THE FIRE DEPARTMENT ARE AS UNDER.

BLOCK - A (FIRE STATION BUILDING)	
1. GROUND FLOOR (Admin. Building)	GROUND FLOOR (Operational Building)
ADFO office with ante room & attached bathroom/toilet	Office for SFO (Operational) attached bathroom/toilet
Visitor Room	Office for ASFO & Leading Fireman on duty.
SFO Office (Administrative)	Duty officer room
ASFOs Office (Administrative)	Duty crew room
Office for Clerical staff	Operational Store room.
Control room	MT Room
Public Relation officer(PRO)	Record room
Sanitary facility	Sanitary facility
06 Nos. appliance bays	
2. FIRST FLOOR (Admin. Building)	FIRST FLOOR (Operational Building)
Office for Director with ante room attached bathroom/toilet	Rest room for duty officers (i.e. ASFO, Leading Fireman)
PA to Director	Guest room attached with bathroom /toilet
Visitor's room	Kitchen with dining Hall
Office for Clerical staff	Model room
Library room	
Office Store room	
Sanitary facility	Sanitary facility

Dormitory for Fireman & Drivers and Physical Fitness Hall	
3. FIRST FLOOR (Admin. Building)	FIRST FLOOR (Operational Building)
Training Hall with attached toilet and pantry room.	Recreation Hall
4. Other facilities	
Facility of sliding pole with duct	
Duct for fire fighting riser and domestic pipe lines.	
All life safety measures and fire fighting requirement as per NBC of India - 200	
Minimum two staircase not less than 1.5 meters width	
One fire escape not less than 1.5 meters width.	
Ramps facilities.	
Internal road surrounding the building for movement of vehicle	
BLOCK - B	
Drill-cum-Hose Drying Tower	
Smoke chamber	
BLOCK - C	
Underground water storage static tank having capacity 08 lakh liters. ar	
overhead water storage tank capacity 2 lakh liters	
Complete Fire Pumping Station with 03 centrifugal fire pumps and D.G. Set wi	
appropriate capacity.	
Hose washing water tank with appropriate capacity.	
Vehicle parking facilities for fire service staff	
Vehicle Servicing ramp/ garage for maintenance purpose.	
BLOCK - E	
Parade/Drill ground	
Flag hosting stage.	
Rope climbing facility.	
Development of garden/landscaping	
Other miscellaneous work.	
BLOCK - D	
Residential accommodation of 'B' and 'C' types for officers and fire service	
personnel with vehicle parking facilities and development of garden	